

## Exploit Aurora's Optical Nodes . . . Cable's "Silver Bullets"

For more information, please contact:



www.aurora.com  
2803 Mission College Blvd.  
Santa Clara, CA 95054  
Voice: 408.235.7000  
Fax: 408.845.9045

### DS4004U Optical Ethernet Multiplexer for Fiber on Demand™ Solutions

The DS4004U features one high-speed (2.125 Gbps) network port and four Fast Ethernet local ports to enable Fiber on Demand™ services. Each local port supports a 100 Mbps full duplex wire-speed Ethernet link that is terminated at the customer premises. The DS4004U module includes a sophisticated add/drop multiplexing function to serve its 2.125 Gbps network port, supporting software-controlled add/drop of traffic at 100 Mbps granularity. This feature enables operators to add and drop only the amount of traffic required per site. Multiple DS4004U modules can be installed in Aurora's award-winning Virtual Hub (VHub™).



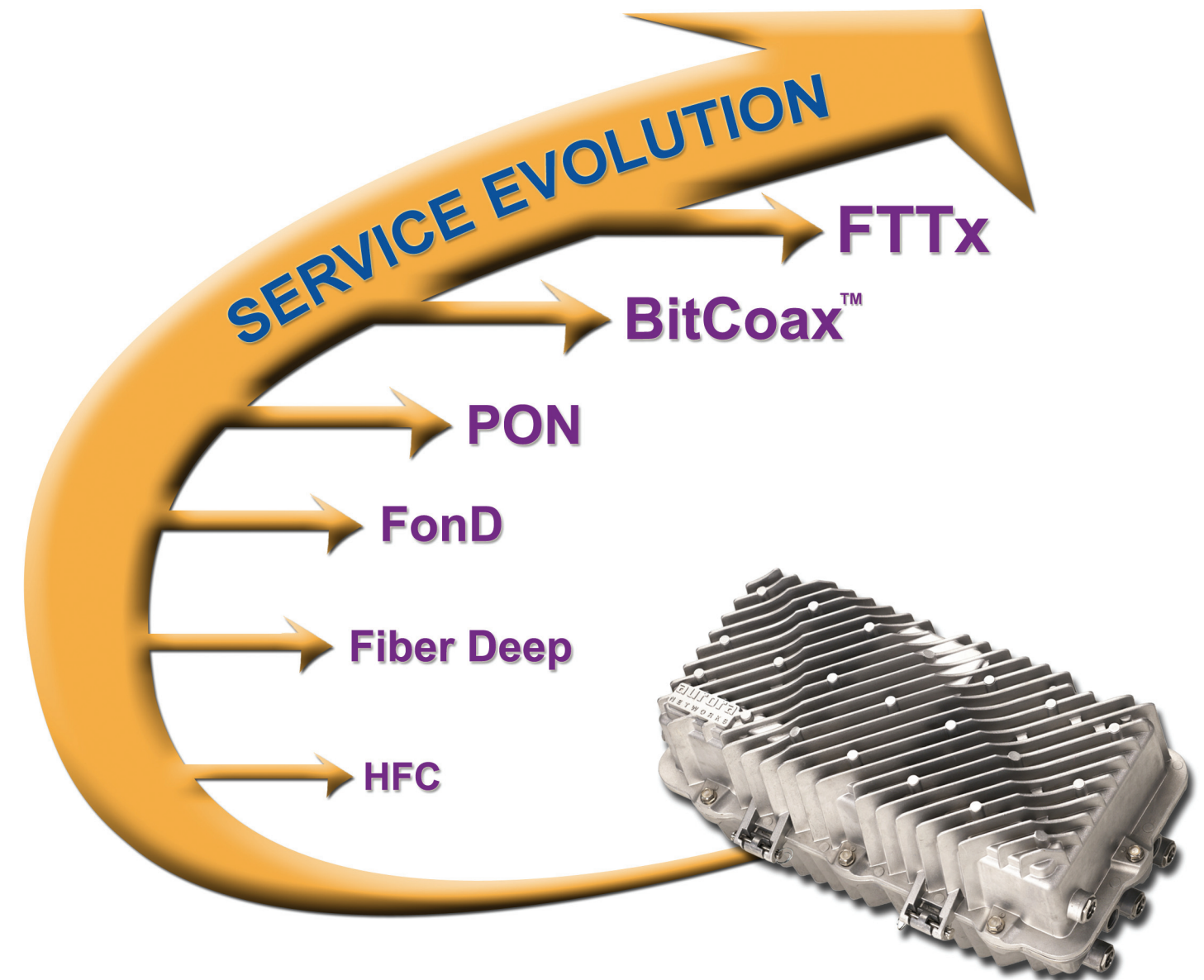
### GE4132M GEPON OLT Module for Node PON™ Solutions



Each GE4132M GbE Optical Line Termination module enables standards-based GEPON functionality for delivery of 1,000 Mbps Ethernet over fiber, interfacing with up to 64 standard GEPON Optical Network Units (ONUs) at customer premises. This node-based passive optical network (Node PON™) supports a point-to-multipoint fiber architecture with simple optical splitters. On the network side, the GE4132M is fully compatible with a standard GbE transport. A second SFP facility (Ethernet 2 port) is available to support daisy-chaining of the Ethernet backhaul.

### GC4232M Module for BitCoax™ Solutions

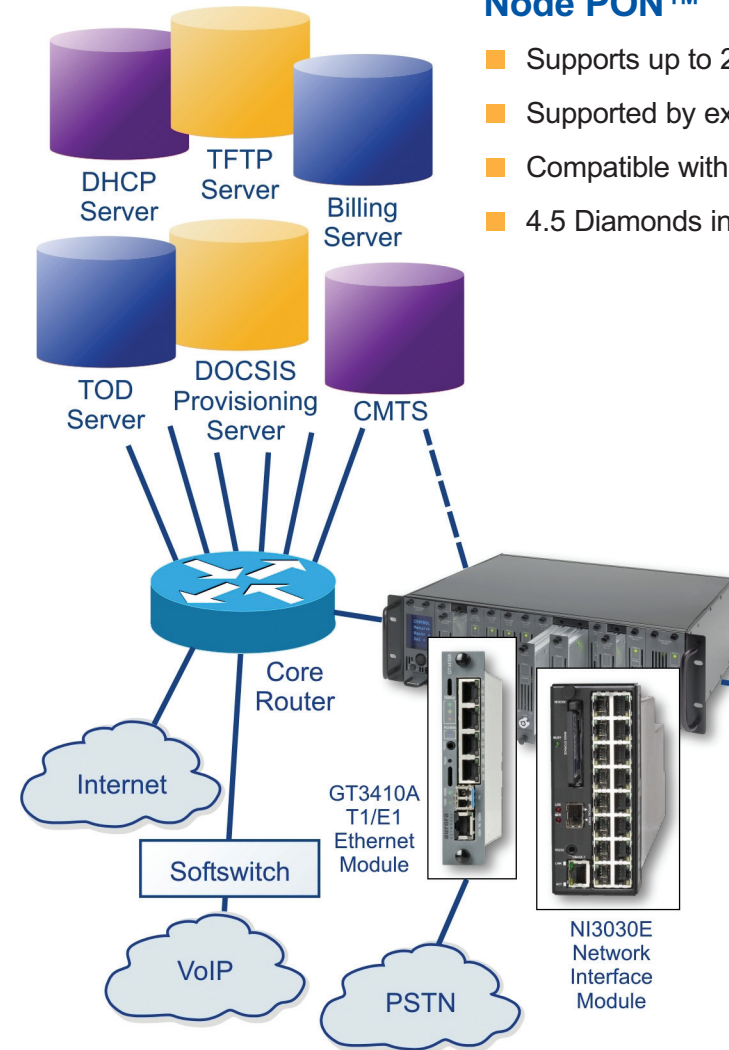
The GC4232M BitCoax Module is a managed scalable 1,000 Mbps Gigabit-over-Coax module that enables operators to mine their existing coax plant by providing ultra-high-speed services to commercial and residential users. Extending the RF spectrum of the coax plant (above 1 GHz) to provision new services, the module delivers up to 200 Mbps of data over coax and is compatible with existing cable modem provisioning systems. Dual SFP facilities allow redundant backhaul using any TR4000 series SFPs (including 1310 nm, 1550 nm, or CWDM).



## Node-Based Access Solutions Breaking Access Barriers™



*A whole new light, growing brighter!*

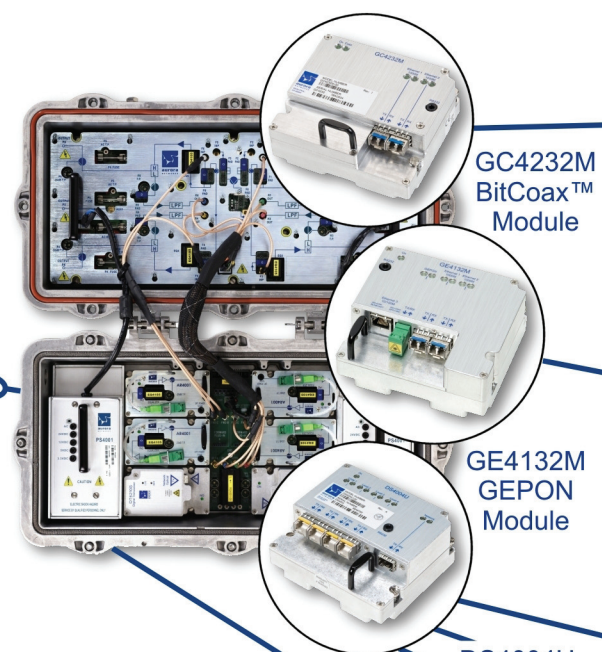


**Node PON™**

- Supports up to 256 (4x64) GEPON users from one Aurora node
- Supported by existing cable modem provisioning system
- Compatible with advanced 1 GHz RF video overlay
- 4.5 Diamonds in 2008 *Broadband Gear Report Reviews*

**BitCoax™**

- Extends the RF spectrum of the coax plant (above 1 GHz) to provision data services
- Delivers up to 200 Mbps of data over coax
- Compatible with existing cable modem provisioning systems



**BitCoax™**

BitCoax™ Cable Modem



**Node PON™**

ONU631HA-11 GEPON CPE ONU



**Fiber on Demand™**

MC2700 Series SMART Media Converters™



EX3005A Ethernet Switch



GT3410A T1/E1 Ethernet Switch



**Traditional HFC and Fiber Deep**



**Fiber on Demand™**

- Support any Ethernet transparent LAN application
- Up to 112 Fast Ethernet users and 80 km reach on a single fiber
- 3.5 Diamonds in 2006 *Broadband Gear Report Reviews*
- MEF-9 certified solution