

Overview of Aurora's Field Passives

Fiber Sizes, Types, and Connector Options for Available Packages

Product Type	Package Style				
	N-Case	C-Case	S-Case	F-Case	
	Connectors				
	None	None	SC/APC	None	SC/APC
Splitters / Couplers	0.25 mm bare fiber	2 mm fiber jacket	2 mm fiber jacket	0.9 mm or 2 mm fiber jacket	2 mm fiber jacket
Single-wavelength Filters	0.25 mm bare fiber	2 mm fiber jacket	2 mm fiber jacket	N/A	N/A
Mux / Demux Modules	N/A	N/A	N/A	0.9 mm or 2 mm fiber jacket	2 mm fiber jacket
Custom Optics (e.g., Light-Plex™)	0.25 mm bare fiber	2 mm fiber jacket	N/A	0.9 mm or 2 mm fiber jacket	2 mm fiber jacket
Band Filters	0.25 mm bare fiber	2 mm fiber jacket	2 mm fiber jacket	N/A	N/A

Model Number Prefixes and Meaning

OP91 - devices operating at 1310 and/or 1550 nm OP94 - devices operating at CWDM wavelengths (ITU-T G.694.2)

OP93 - devices operating at LcWDM® wavelengths OP95 - devices operating at DWDM wavelengths (ITU-T G.694.1)

Refer to individual product data sheets for specific ordering information.

Package Styles

All packages shown at 50% of actual size

N-Case

Max 60 x 5.5 (diameter) mm Package

Example: OP91S3S-EQ-N0-00 1x3 Splitter



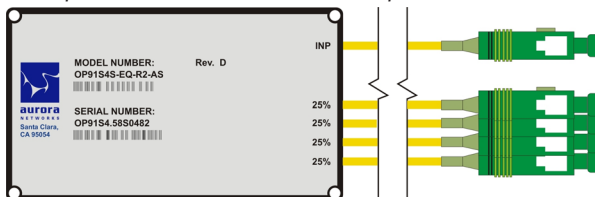
Available products:

Splitters / Couplers Single-wavelength Filters
 Custom Optics Band Filters

S-Case

Ruggedized 89 x 51 x 9.2 mm Package

Example: OP91S4S-EQ-R2-AS 1x4 Splitter



Available products:

Splitters / Couplers Single-wavelength Filters Band Filters

C-Case

Ruggedized 98 x 14 x 8.5 mm Package

Example: OP95F1S-CF-1-0-R2-00 Red/Blue Bands Filter



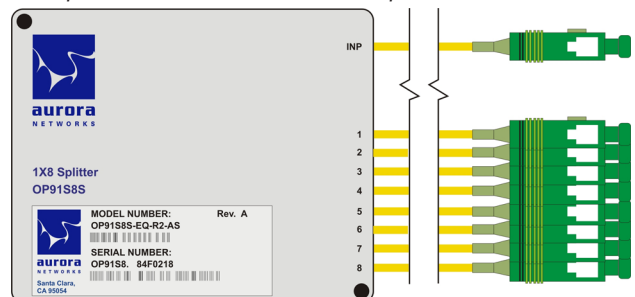
Available products:

Splitters / Couplers Single-wavelength Filters
 Custom Optics Band Filters

F-Case

Ruggedized 95 x 78 x 8 mm Package

Example: OP91S8S-EQ-R2-AS 1x8 Splitter



Available products:

Splitters / Couplers Custom Optics (Light-Plex) Mux / Demux

Module Passthrough Ranges

(for all input and output ports except ports that are wavelength- or channel-specific)

Only 1263.5 – 1357.5 Passthrough

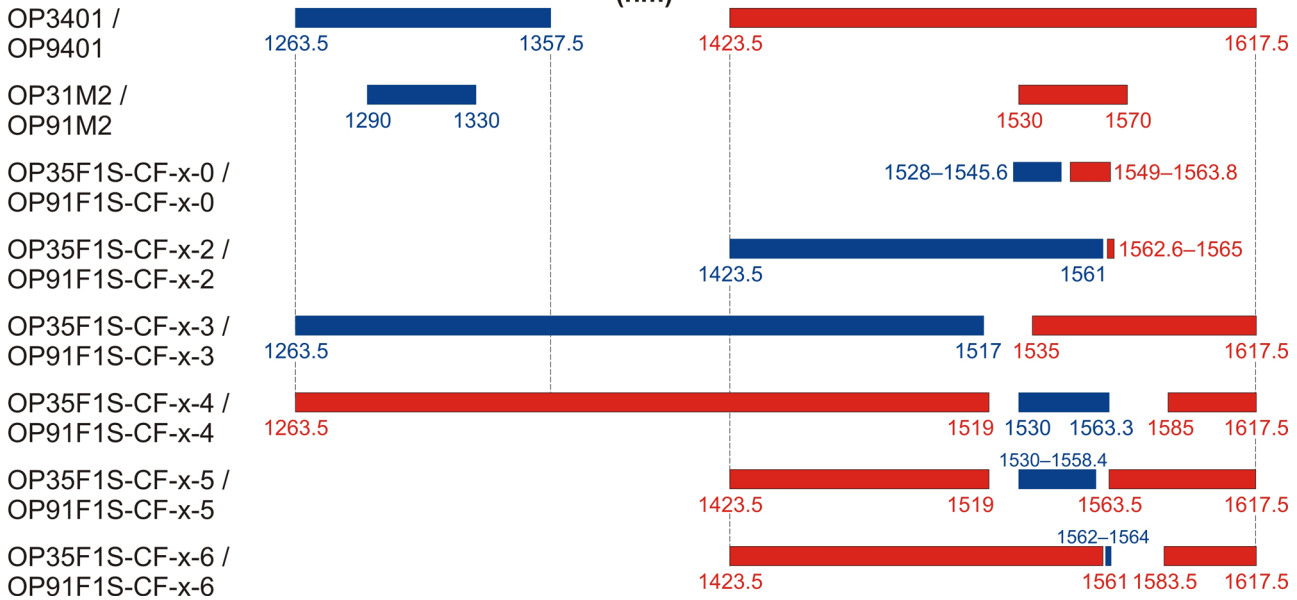
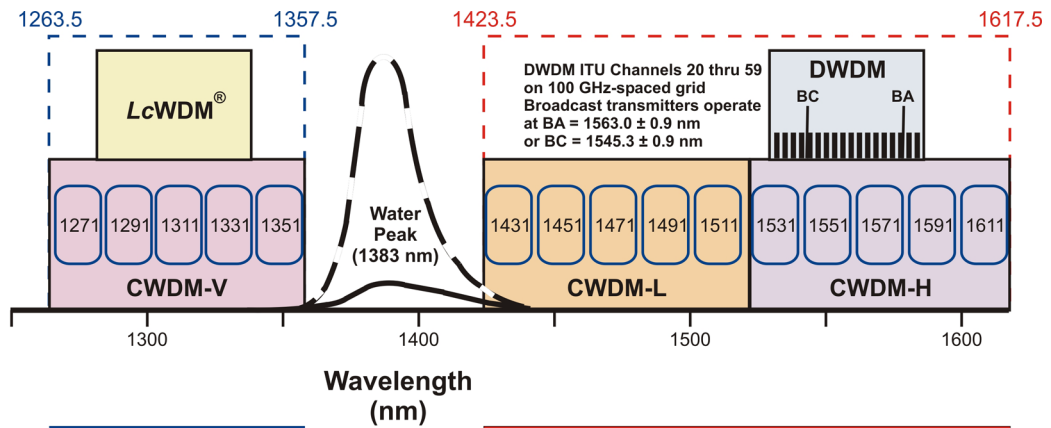
LcWDM®: Mux / Demux / Filters (OP33xxx, OP93xxx)

CWDM-V: Mux / Demux Modules (OP34x5V and OP94x5V) and Filters (OP34F1x and OP94F1x)

Only 1423.5 – 1617.5 Passthrough

DWDM: Light-Plex® Modules (OP3514, OP3524, OP3534, OP4528, OP4538, OP9534)

CWDM-L and CWDM-H: Mux / Demux Modules (OP34x5L, OP34x5H, OP34x10, OP94x5L, OP94x5H, and OP94x10) and Filters (OP34F1x and OP94F1x)



Corporate Headquarters

5400 Betsy Ross Drive
 Santa Clara, CA 95054
 Tel 408.235.7000
 Fax 408.845.9045